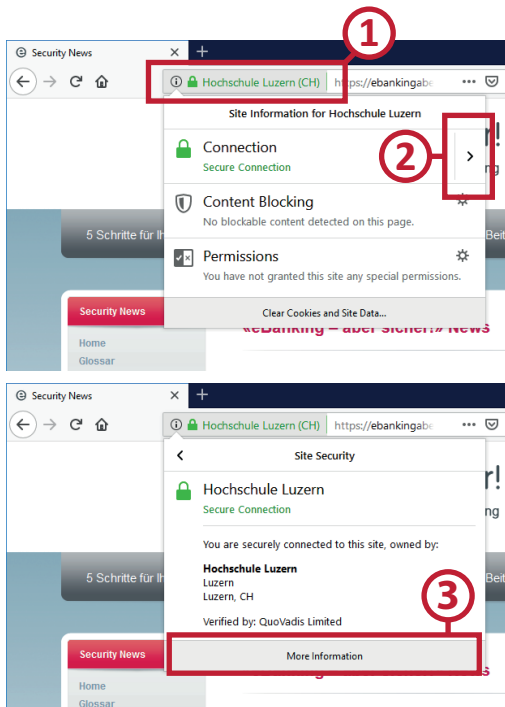


Checking a certificate fingerprint Firefox 64 and above

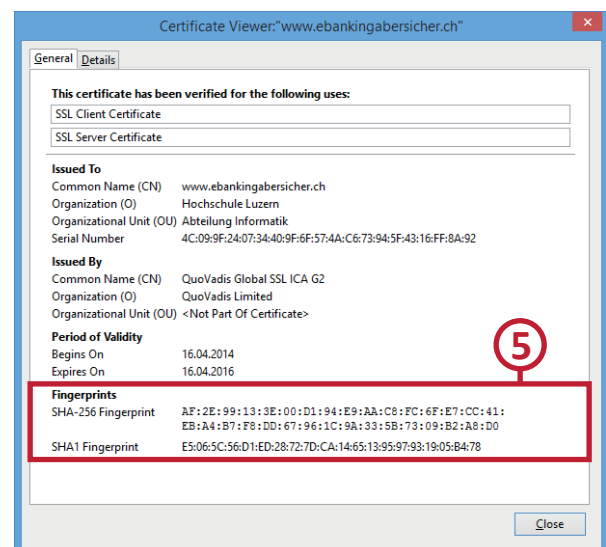
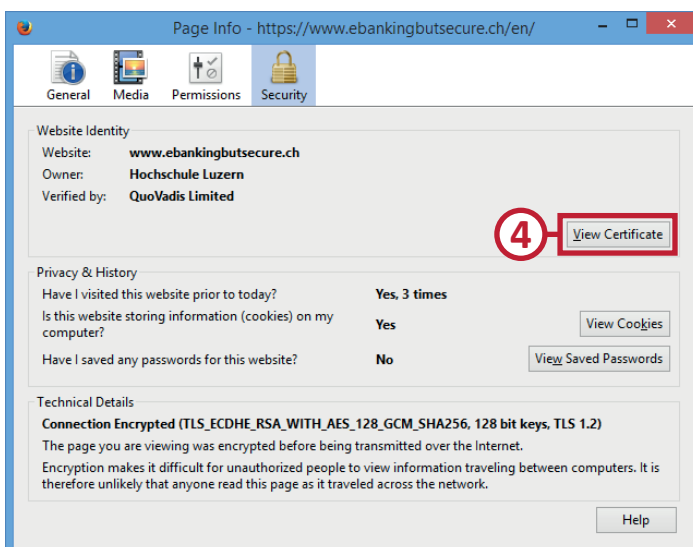


① Click on the *website identity* bar.

② Click on the arrow to have more information displayed.

③ Click on *More Information*.

④ Click on *View Certificate*.



⑤ The fingerprint is checked via a comparison of the character string shown to a reference string which you will have received from your financial institution. If the character string identified from the certificate is identical to the reference string received from your financial institution, the certificate is authentic. When comparing, please take into account the fingerprint type: The sequence shown and the reference string sequence must be of the same type (SHA-256 or SHA1 each). Our partners' certificate fingerprints can be found on our website under heading *Your Security Contribution* and then selecting *Checking certificates*.

«eBanking – but secure!» is offering helpful security hints for e-banking users

@Banking but secure!

You will find further practical information on measures and approaches required to ensure that e-banking applications are used securely under www.ebankingbutsecure.ch. The use of this website is free.

Hochschule Luzern – Informatik
Campus Zug-Rotkreuz, Suurstoffi 41b
CH-6343 Rotkreuz